



HealthPathways represents!

HealthPathways has had a busy few months. We have been producing new content, reviewing pathways that have been live for two years, and recruiting new editors. We have also been attending a number of conferences.

In May, all off the NSW HealthPathways regions combined to host a stand at the GPCE conference in Homebush. A new brand, HealthPathways NSW, was formed and is the start of a number of collaborations across the state.

In June, HealthPathways attended the SWSPHN annual conference where we launched the new patient site, Health Resource Directory.org.au.

The new patient site marks another step in integrating care across primary and secondary services and the consumer. More information about the site can be found in this issue.



On June 8, HealthPathways South Western Sydney presented at the Health Beyond Research and Innovation Forum hosted by SWSLHD. The presentation was on the new patient site and its integration with the HealthPathways clinical site.

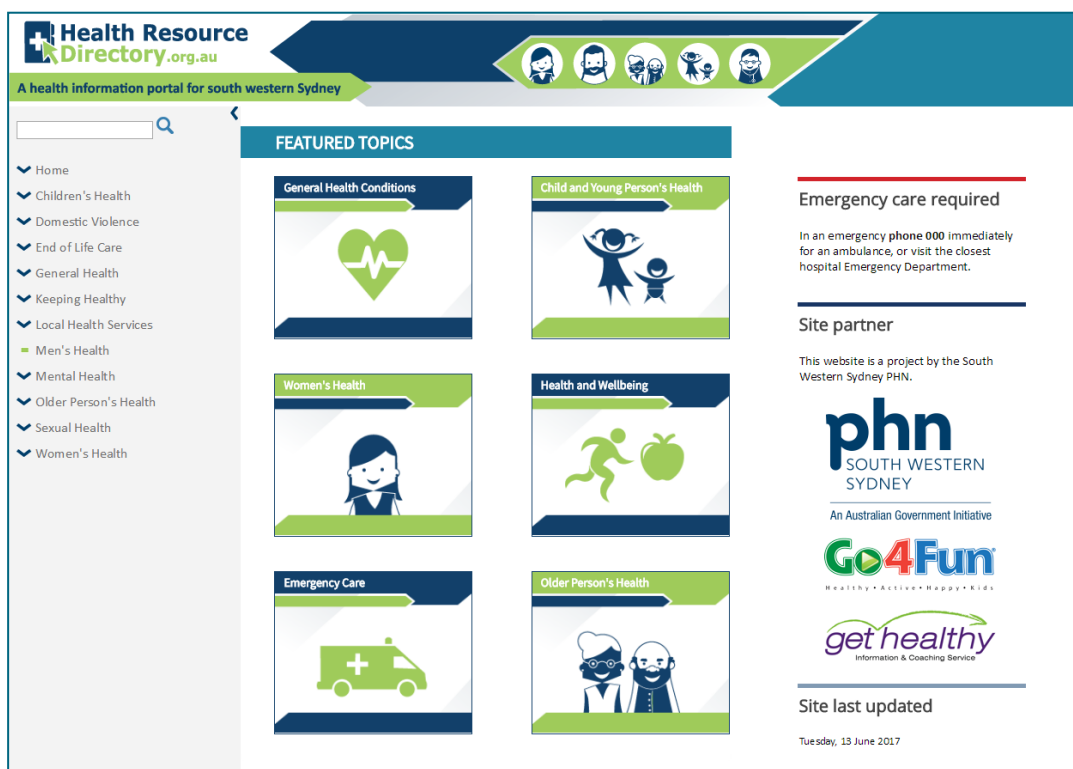
Health Resource Directory.org.au is now live

The patient site, Health Resource Directory.org.au, went live on June 3.

The patient site is a companion portal to HealthPathways, sharing the same infrastructure. The patient information sections at the bottom of the clinical pathways are automatically transferred to the patient site.

This means any pathways localised on HealthPathways will have a corresponding page of patient information on Health Resource Directory.org.au.

For some pages, additional content is available to assist patients in navigating health and support services.



Health Resource Directory.org.au landing page

Program Overview

Pathway development

- 297 Live
- 72 In development
- 80 In review

New pathways

- [Hospital in the Home](#)
- [Ambulatory Care Day Services](#)
- [Antipsychotic medications](#)
- [Cervical screening](#)
- [Medications in breastfeeding and pregnancy](#)
- [Sedation for MRI in adults](#)
- [Carer support](#)
- [Influenza immunisation \(updated\)](#)
- [Peri-operative management in T2D](#)



New CPD Videos

- Travel vaccination and immunisation update
- Managing opioid dependence in general practice

Top 5 Pathways (last 12 months)

1. [Referral and claim forms](#)
2. [Chronic pain](#)
3. [Non-Urgent antenatal care referrals](#)
4. [Antenatal first consult](#)
5. [Child with a rash](#)



Health Resource Directory: An easy way to provide patient information

The new patient site provides a means to patients to access trusted patient information that has been reviewed and endorsed by local GPs and hospital specialists.

To assist GPs in promoting the site to patients and to reduce printing costs in the practice, SWSPHN will be providing promotional pads to all GPs in the region.

All the GP needs to do is write down the name of the health condition in the white box, tear the page off the pad and hand it to the patient.

The patient can then go home, go to the website and download multiple patient information sheets regarding that condition.

It is just another way that HealthPathways is trying to support clinical practice for GPs in south western Sydney.



Sample of the new patient information pads

Health Resource Directory: Patient Factsheets

As part of the launch of Health Resource Directory.org.au, SWSPHN has invested in the development of health information content for the people of south western Sydney.

This health information content, commonly known as 'HRD factsheets', is based off the clinical content on HealthPathways. This ensures the content on the factsheet outlining 'what your GP will do' and 'what they can do to manage their health condition' complements the clinical guidance being given on the clinical site.

The factsheets are designed to be 'post-diagnosis' and are not symptoms checkers or health promotion information. They are designed to be read following a GP consult where a diagnosis has been given and treatment commenced.

A consistent structure to the factsheets was developed. The content is separated into:

- What is it?
- What will my GP do now?
- What will my GP do in the future?
- What can I do?
- What supports are available?
- What questions should I ask my GP?
- Where can I find out more?

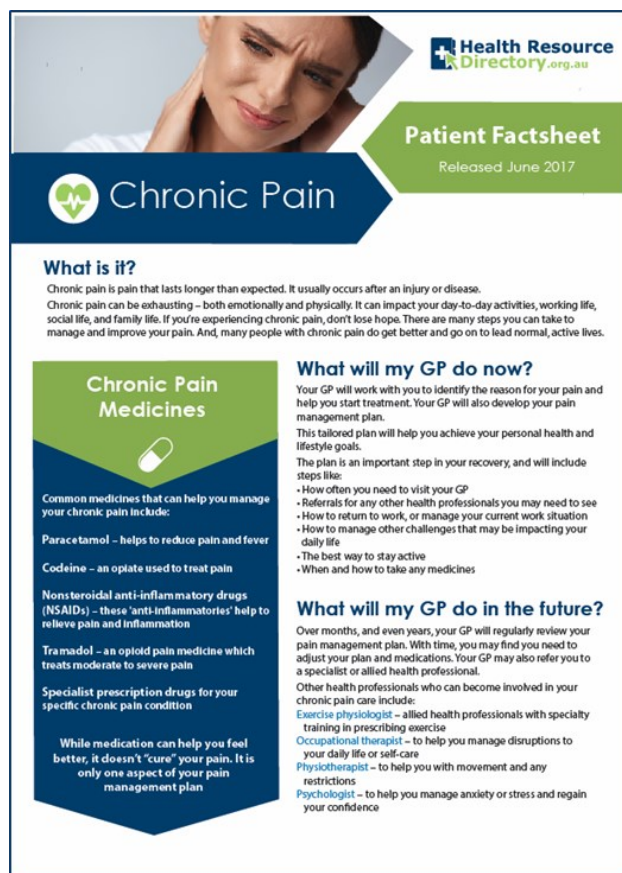
Other sections, such as 'when should I call an ambulance', are included as needed.

The process for creating these factsheets includes content development by a technical writing company that specialises in creating patient health information content.

The 'draft' is then reviewed by the SWSPHN Community Advisory Council and a HealthPathways GP Editor.

Once ready for publishing, the document is linked to on both the clinical and patient portals.

Each factsheet will also be translated into Arabic, Vietnamese and Simplified Chinese and also be hosted on the site. In the future, audio translations will also be available.



Sample draft of front sheet of the Chronic Pain factsheet

