



Progress Report (as of 31/12/16)

Pathways localised	241
Pathways in development	124
Workgroups completed	13
Workgroups in development	1
Number of site users	3,388
Number of page views	72,489

New localised pathways:

- [Acute Crisis Mental Health](#) (7 Pathways)
- [Child and Young Person Mental Health](#) (5 pathways)
- [Child with a Rash](#)
- [Principles for Care Provision for Aboriginal and Torres Strait Islander Peoples](#)
- [Taking Medical Photographs](#)

Pathways in consultation:

- Antenatal Care
- Pharmacotherapy in Child and Young Person Mental Health

To be part of the consultation process, email swshealthpathways@sswhs.nsw.gov.au.

Top 5 pathways:

- [Aged Care Assessment Services](#)
- Women's Health (not localised)
- [Diabetes](#)
- [Sexual Health](#)
- [Antenatal Care Referrals](#)

Upcoming Workgroups:

- Drug and Alcohol: To Be Advised

See the project site [Events Calendar](#) for more details.



Health
South Western Sydney
Local Health District

phn
SOUTH WESTERN
SYDNEY

An Australian Government Initiative

2016: A year in review

2016 has been a year of great development for HealthPathways South Western Sydney. Some highlights include:

- Localising over 150 new pathways in palliative care, pain management, mental health, child development, HIV, etc.
- HealthPathways official launch in May at the PHN Conference
- 250+ health professionals contributing to the development of pathways
- Reaching a new usage milestone of 1000+ sessions per month

So is it time for a break then? Not a chance!

Some of the developments expected in 2017 include:

- A patient version of HealthPathways
- Online learning modules
- New pathways in the areas of pregnancy, obesity, drug and alcohol and many more.

We look forward to working with you in 2017 and expanding this program to better meet the needs of health professionals in South Western Sydney

HealthPathways Diabetes Evaluation

HealthPathways is currently evaluating its type 2 diabetes pathways. A GP survey has been developed and only takes a few minutes to complete.

The information received will be used to help us understand how and if you use the HealthPathways for your patients with diabetes.

Before exiting the survey, you may be invited for a short interview with our research team (reimbursement is provided).

The information received will be used to help understand how, and if, GPs use the site for patients with diabetes.

For those who have already completed the survey, you are automatically entered. The winners will be drawn on Friday 28 April 2017.

The survey can be accessed at www.surveymonkey.com/r/HIT2Evaluation.

Clinical pathway spotlight: Child with a Rash

Infections are the most common cause of illness in children and many illnesses present with rash and fever. Identifying the correct illness can often be challenging, both in terms of assessing the risk of contagion and appropriate management.

The [Child with a Rash](#) pathway is the brainchild of Dr John McMahon, who suggested a pathway to assist GPs in assessing the symptoms of fever and rash and identifying a differential diagnosis and management plan.

This pathway provides exactly that; guidance on the assessment and triaging of a child presenting with a rash and/or fever, the quarantine requirements of the disease and the appropriate management of 20 different diseases causing rash and fever in children.

The pathway also provides a range of images to assist with assessment, including images of rash types and pathognomonic symptoms.

To coincide with the release of this pathway, HealthPathways South Western Sydney and SWSPHN is providing free rash identification resources for GPs and medical centre treatment rooms. Contact your PSO to acquire this resource.



Treatment Room Poster (A3 sized)

Clinical pathway spotlight: Acute Crisis Mental Health

- [Deliberate Self-Harm](#)
- [General Health Management of Chronic Mental Illness](#)
- [Suicidal Risk](#)
- [Adult Specialist Mental Health Requests](#)
- [Adult Counselling and Support Services](#)
- [Perinatal or Post Natal Mental Health Referrals](#)
- [Urgent or Immediate Mental Health Specialist Referrals](#)

Whenever HealthPathways has spoken with GPs and asked which clinical areas we should focus on, we almost always hear 'mental health' as one of the responses. We listened.

The Acute Mental Health Crisis section of HealthPathways is now live and includes a number of pathways designed to assist health professionals.

The [Suicide Risk](#) pathway provides a scalable document (2-11 pages) providing guidance on the

assessment of suicidal ideation and factors to include when stratifying risk. The request section is separated based on the level of risk and also the age of the patient to more efficiently assist GPs to identify the appropriate referral points.

The [Deliberate Self-harm](#) pathway provides guidance on the assessment and management of a patient engaging in deliberate self-harm. It includes resources for the patient (Keep-Safe cards) and their family if a young person.

The [General Health Management of Chronic Mental Illness](#) is a useful guide on the recommended medical checks to be completed on patients with chronic mental health issues, in particular those on atypical antipsychotics.

Finally, the [mental health request section](#) has been completed providing listings of urgent referrals, specialist mental health referrals and community based support services.

HealthPathways Project Team

Program Manager:
Ben Neville

GP Clinical Lead:
Dr Chee Khoo

SWSLHD Clinical Lead:
Dr Alisa Kane

GP Clinical Editors:
Dr George Berkowski
Dr Nicole Hall
Dr Alan Huynh
Dr John McMahon
Dr Tim Senior
Dr Susan Sunwoo
Dr Eman Younathin

Clinical pathway spotlight: Child and Young Person Mental Health

- [Acutely Disturbed Young Person](#)
- [Mental Health Presentations in Children](#)
- [Mental Health Presentations in Young People](#)
- [Child or Young Person Specialist Mental Health Referrals](#)
- [Child or Young Person Counselling and Support](#)

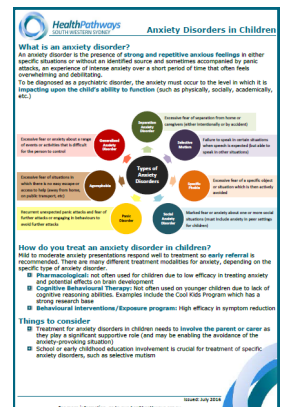
The [Child and Young People Mental Health](#) pathways are now live.

The pathways focus on identifying the underlying cause of mental health concerns in children and young people and engaging appropriate supports for the family.

The structure provides guidance on assessing any type of mental health presentation. A number of resources have been developed that then provide more specific detail regarding the various types of mental health disorders and their influence on treatment for children and/or young people.

The [Acutely Disturbed Young Person](#) pathway provides guidance on identifying potentially prodromal or drug-induced psychosis.

There have been a number of [request pages](#) also developed to compliment the previously existing pages such as [E-mental health](#) resources.



Clinical editor spotlight: Ben Neville

Ben Neville is the manager for HealthPathways and has been working in this role since January 2016.

Ben is a registered psychologist and has worked in the Health industry since 2004, with both clinical and management positions in Drug Health, Community Health and Private Practice.

Ben has an interest in information technology and systems analysis and is the author of the HealthPathways practice templates.

Ben was also involved in localising the Domestic and Family Abuse and Violence, Child Development and Mental Health suites of pathways.



HealthPathways program snapshot (extract from Monthly Program Snapshot)

The Monthly Program Snapshots are available in the progress section of the [project website](#).

